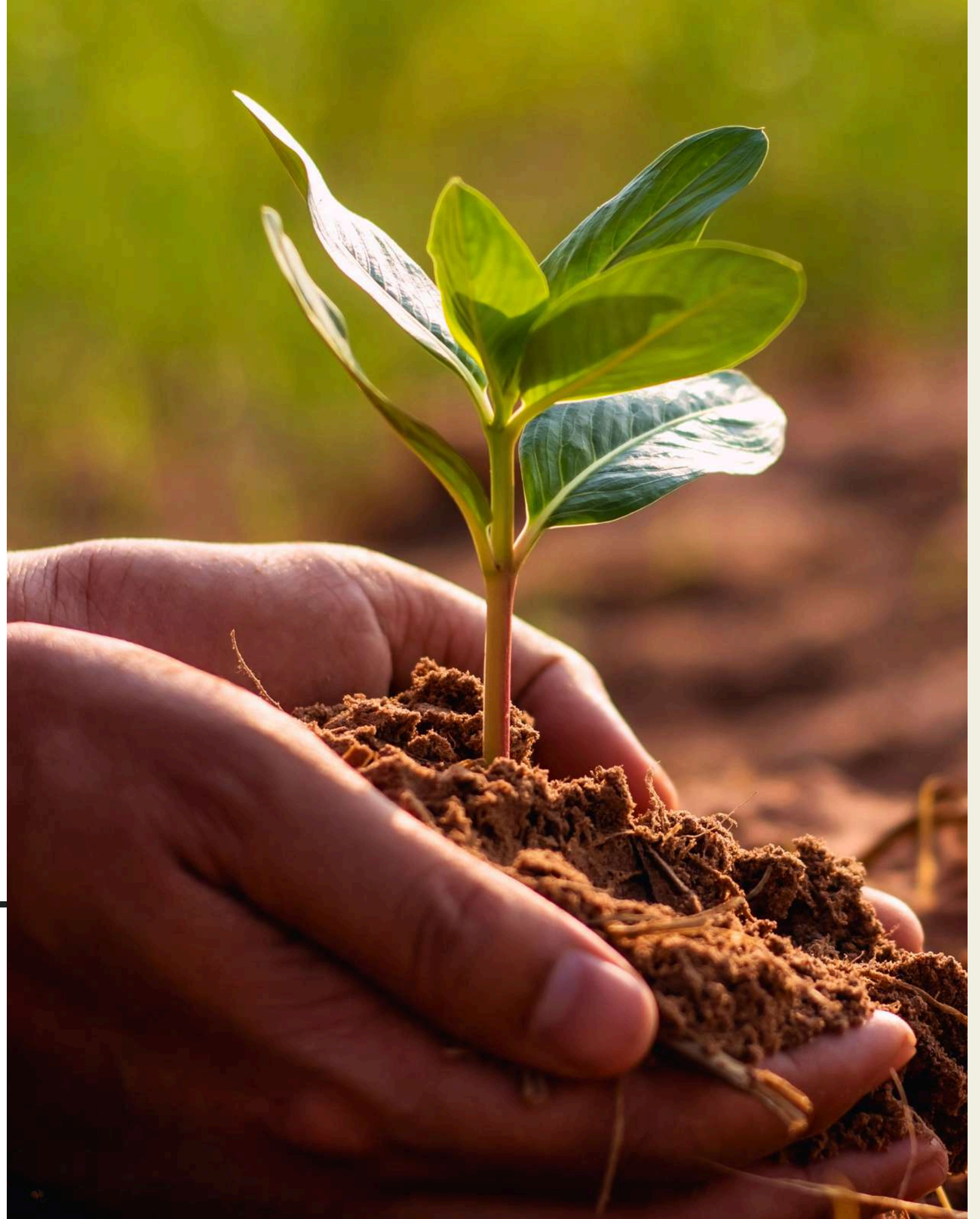




PRESENTATION

**SOCIAL AND SOLIDARITY
INNOVATION**

EDUCATION | FOOD DEMOCRACY
EUROPEAN CITIZENSHIP





Sowing tomorrow from today



OUR MISSION

As a bridge builder from today to tomorrow, Cultiver l'Avenir offers an overview of inspiring European solutions with the aim of germinating innovative models that are favorable to sustainable and autonomous generations. With our eyes set on a future that can collectively face the challenges of our society, we aim to promote solidarity and inclusion in Europe through the deployment of a 3-stage program:

- 1 Identify initiatives and methods** that promote the empowerment of citizens to act by meeting actors involved in collective projects.
- 2 Disseminate and transmit innovations** in the field of solidarity and inclusion among ESS stakeholders and the general public by producing educational documented materials.
- 3 Promote the dissemination** of good practices by providing tools and supporting the actors in action.

Our team who are we ?



MATHIS FARROUILH

Co-founder, leader of the 2025 program

“Volunteer on **vacation stays**, volunteer at the **Escale center** to combat school dropouts, then in an **educational center** in Uruguay and today Education officer at **FACE Loire-Atlantique**, my experience in relation to young people colors my profile with an educational touch! **Popular education** as well as **pedagogy** animate my reflections and it seems essential to me to discover and disseminate the good practices of our neighboring countries on these subjects.”



TIPHAÏNE GUEHENNEUC

Co-founder, leader of the 2025 program

“Involved in the **fight against precariousness** through an associative commitment within the **Red Cross** and professionally as a Project Manager for the **SolidaRen Foundation**, my experience with people in street situations nourishes my thinking on the challenges of a **sustainable food system**. Curious about people and the collective, I am keen to meet those who **promote access to healthy food for all** and to pass on their knowledge in order to drive initiatives in favor of social justice.”





Program 2025



FEEDING IN THE FACE OF INEQUALITIES IN EUROPE

To feed (verb):

- meaning 1 : *to raise, to educate*
- meaning 2 : *to feed, to sustain.*

Faced with the persistent social divide, our first program aims to act on the two priority markers of social inequalities: education and food.



On the **food side**, we will observe **democratic models** that allow citizens to **regain power over how they access healthy food that is reconnected to agriculture**. That is, a chosen, sustainable and accessible diet.

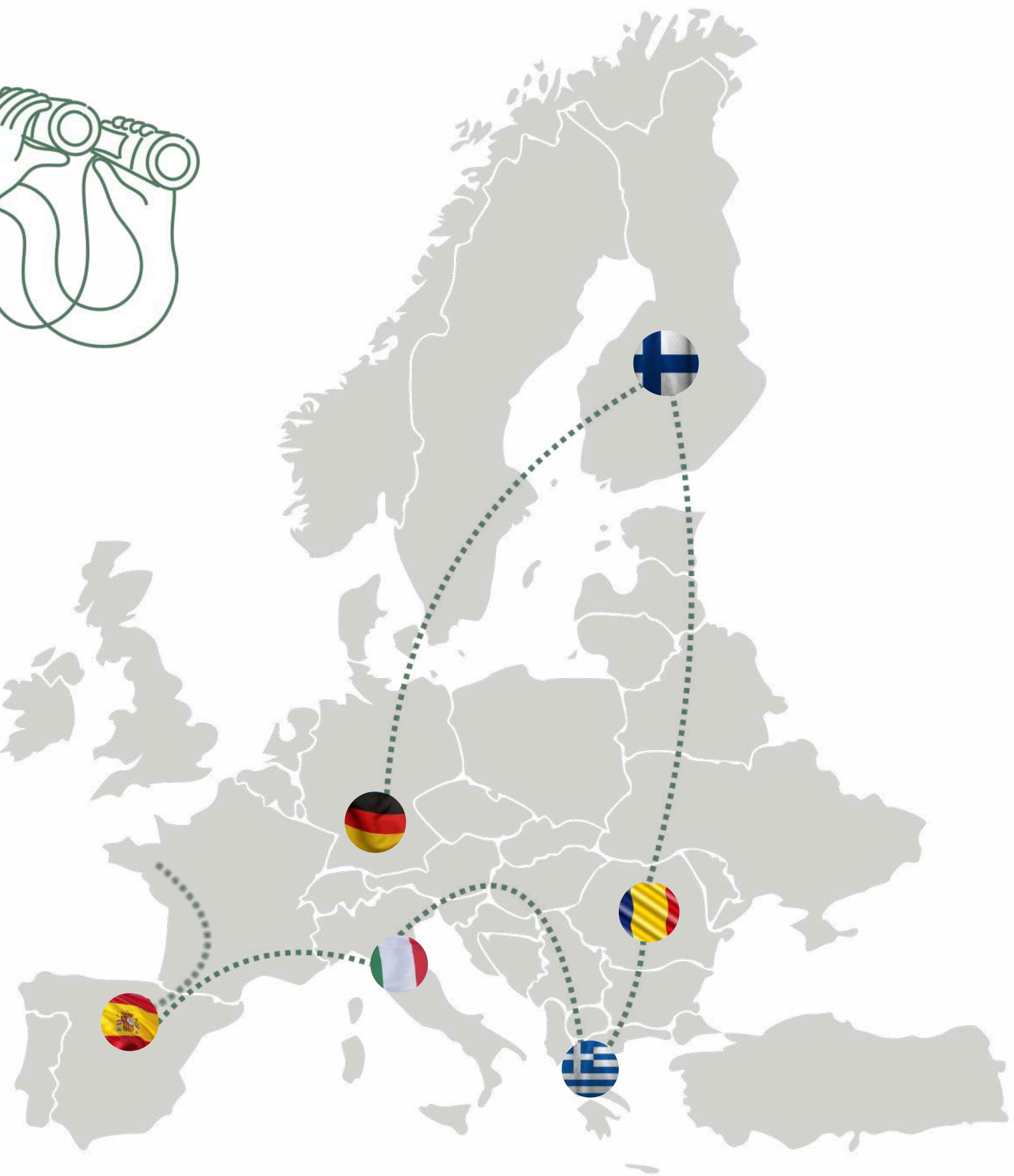
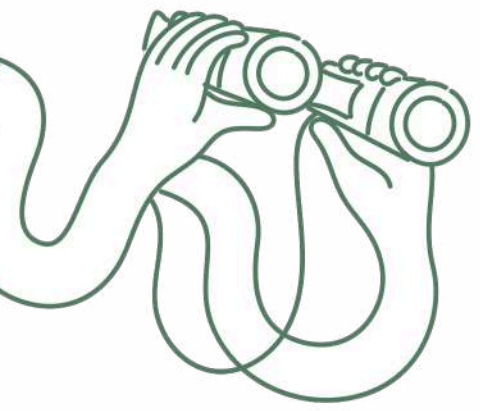
At the end of 2022, food banks had 2.4 million people using food aid in France.



Food democracy **findings and issues**

Mostly industrial and processed, the foodstuffs distributed by the current food aid system raise real nutritional questions and impact the health of already vulnerable people. A non-chosen diet, resulting from anti-waste, also questions the question of dignity in a context of life subject to social exclusion.

Food democracy represents the demand of citizens to collectively regain power over how they access their food, ensuring that it is reconnected with agriculture. It aims for the objective of a triple common health, human, social and environmental, in order to improve the overall well-being of territories.



Our observation across Europe



“Cultiver l’Avenir” Together means, above all, understanding what unites us and differentiates us. The objective is therefore to draw up an inventory that is representative of the unique contexts of European countries. In this sense, the 2025 programme provides for an observation based on performance criteria :

Food democracy

local and organic food supply - fair and supportive pricing policy for all stakeholders - cooperative activities and operations - territorial alliances and pooling - diversity of consumer audiences.


TRAVEL

Concerned about the carbon footprint of this tour of Europe, Cultiver l’Avenir has chosen to travel from country to country exclusively by train !



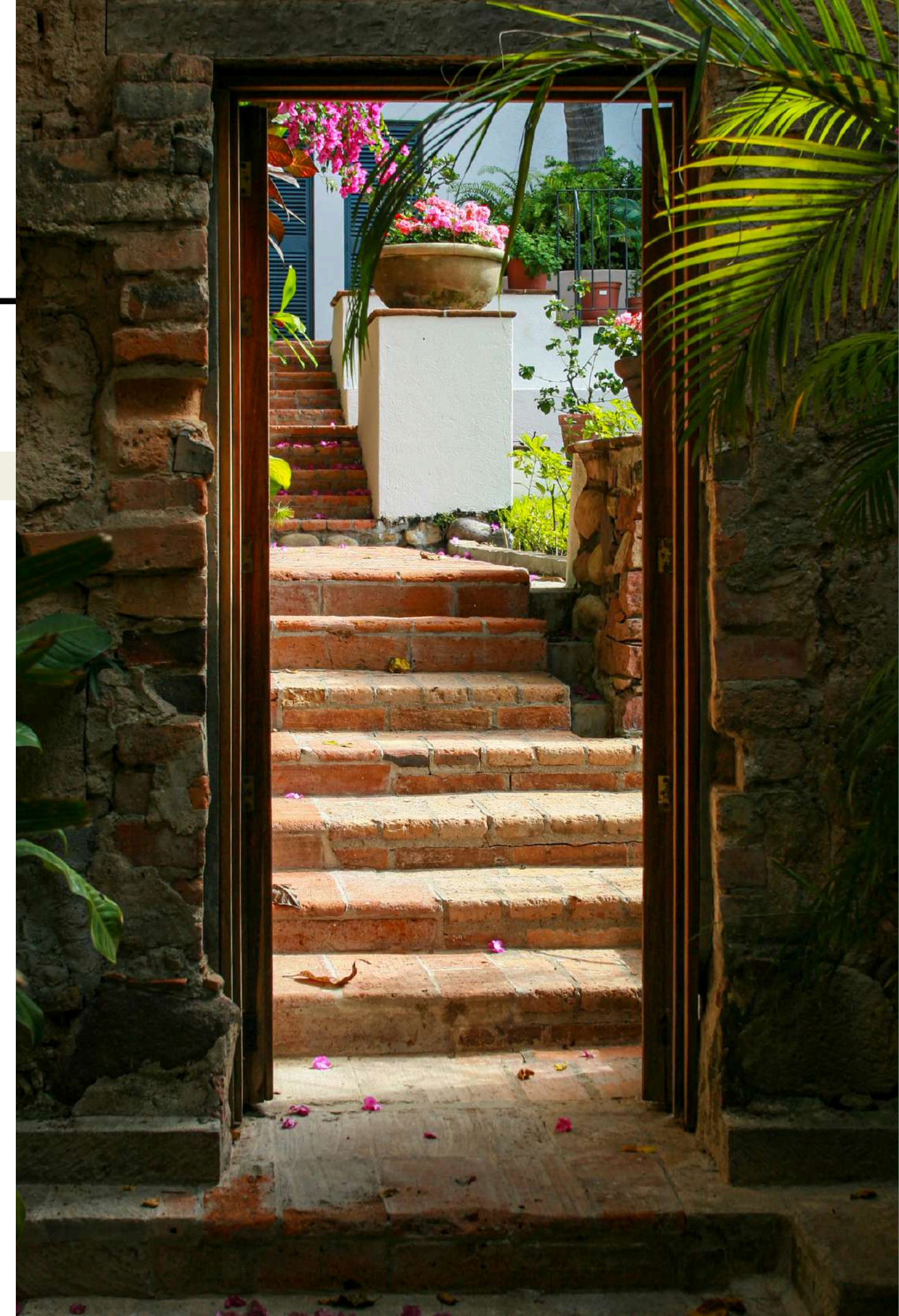
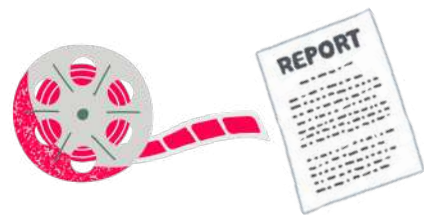
Open your doors

The stakes and interests



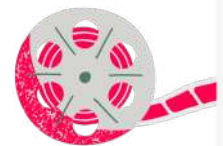
MEET

- Analysis and sharing of **inspiring practices linked to its field of action**;
- **Analysis of the practices** of its own structure;
- **Linking with other structures** in Europe;
- **Promotion** of the structures encountered in **our written reports** as well as in our **documentary**.



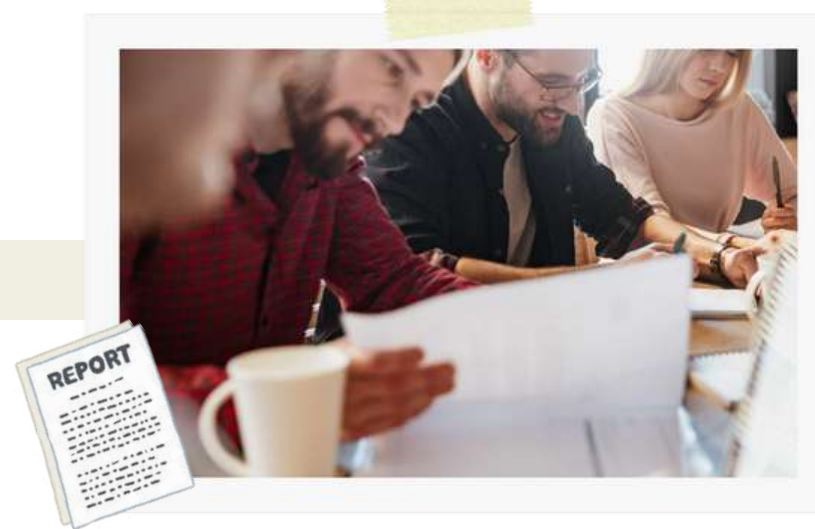
And after?

from diffusion to swarming



MEET

Made with the testimonies of inspiring encounters, our **DOCUMENTARY “Feeding in the face of inequalities in Europe”** will question those who bring solidarity and inclusion to life in Europe. Drawing a portrait of a generation that faces educational and food challenges, it will be a tool **to build connections, lead the debate and raise awareness** among the general public and professionals.



TO TRANSMIT

Distributed to stakeholders in education, food accessibility and the Social and Solidarity Economy, our **WRITTEN REPORT of the 2025 programme** will present inspiring initiatives and innovative methods identified in Europe. It will be a **transmission tool** encouraging the **analysis of practices** and **the transition to action**.



CO-BUILD

Straight from our European tour and inspired by popular education, our **TOOL CASE** will propose collaborative and concrete actions to act together. It will be a tool for **raising awareness and supporting the dissemination of virtuous practices**.

Partners

they already support us



We are currently developing our network of technical and financial partners at the departmental level. The structures already partners of the project are invested in educational, cultural, urban food and combating food insecurity initiatives for students in Rennes and Dinard:



Maison de l'Europe
Rennes - Haute Bretagne



Media

they talk about us



Ces deux Rennais vont faire un tour d'Europe pour recenser l'innovation alimentaire et éducative

Les Rennais Tiphaine Guehenneuc et Mathis Farrouilh partiront en janvier pour un périple de six mois en Europe. Objectif : rencontrer et documenter les bonnes initiatives pour faciliter l'accès à une alimentation saine et à l'éducation.

Ouest-France
Fabienne RICHARD.
Publié le 24/11/2024 à 19h48

Abonnez-vous

LIRE PLUS TARD

PARTAGER

Newsletter Rennes



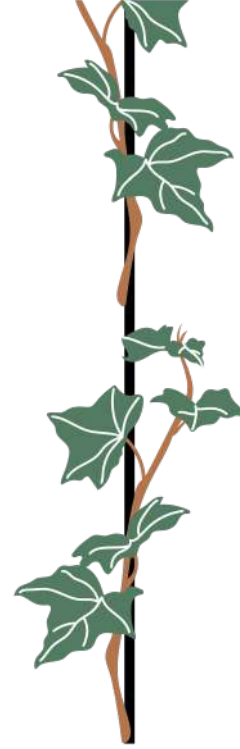
Ouest France



Radio Laser

More information by scanning the QR CODE





READY TO JOIN US?

Contact us and let's cultivate tomorrow
now, together! 😊



association.cultiverlavenir@gmail.com



Tiphaine

Mathis

07 88 30 74 80 / 06 22 60 20 34



f in

